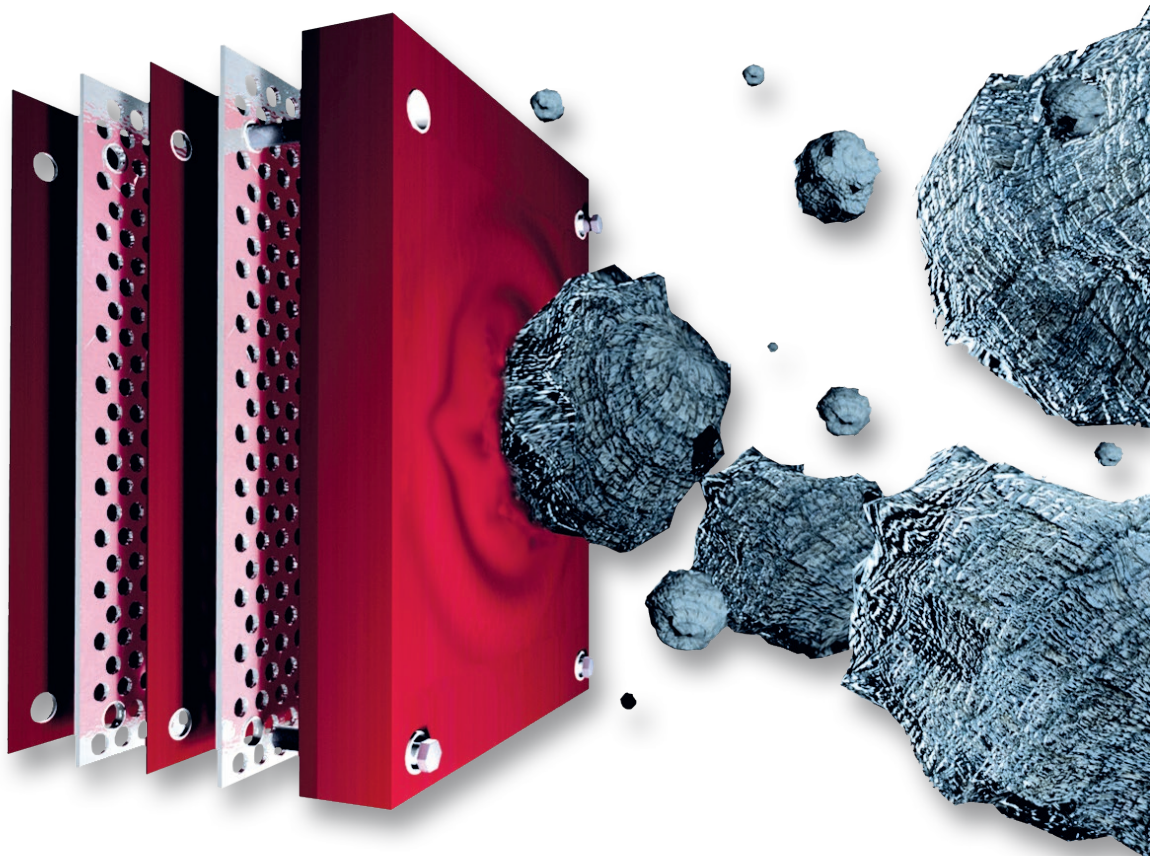


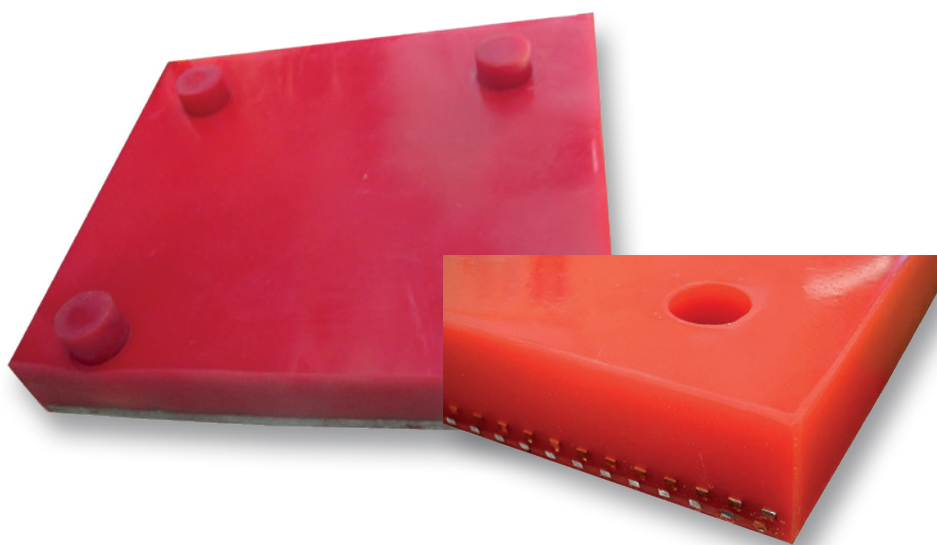
MULTI-LAYER

for the highest requirements



- Extremely high wear resistance
- Abrasion by DIN 53516 / ISO 4659 - 5,8 mm³
- Extremely form stable due to double 4 mm perforated sheet metal insert
- 60% weight saving compared to the normal steel reinforcement
- Due to PUCEST TIX anytime reparable
- Size and dimensions at the customer's option
- Easy installation





APPLICATIONS



MATERIAL PROPERTIES

Degree of Hardness	DIN 53 505	ShoreA	55	65	85	TIX
Abrasion	DIN ISO 4649	mm ³	6,3	6,4	7,6	41,9
Tensile strength	DIN 53 504	N/mm ²	24,6	43,3	47,7	...
Tear prolongation resistance	DIN ISO 34-1	N/mm	18,7	20,8	25,1	...
Elongation at tear	DIN 53 504	%	623	564	475	225
Rebound Resilience	DIN 53 512	%	50	50	43	...
Temperature range	from -30 ° to 80 °, max. during short time up to 100 °					